



QUALITY+

Guide to Statin Measures

Commercial Quality Improvement



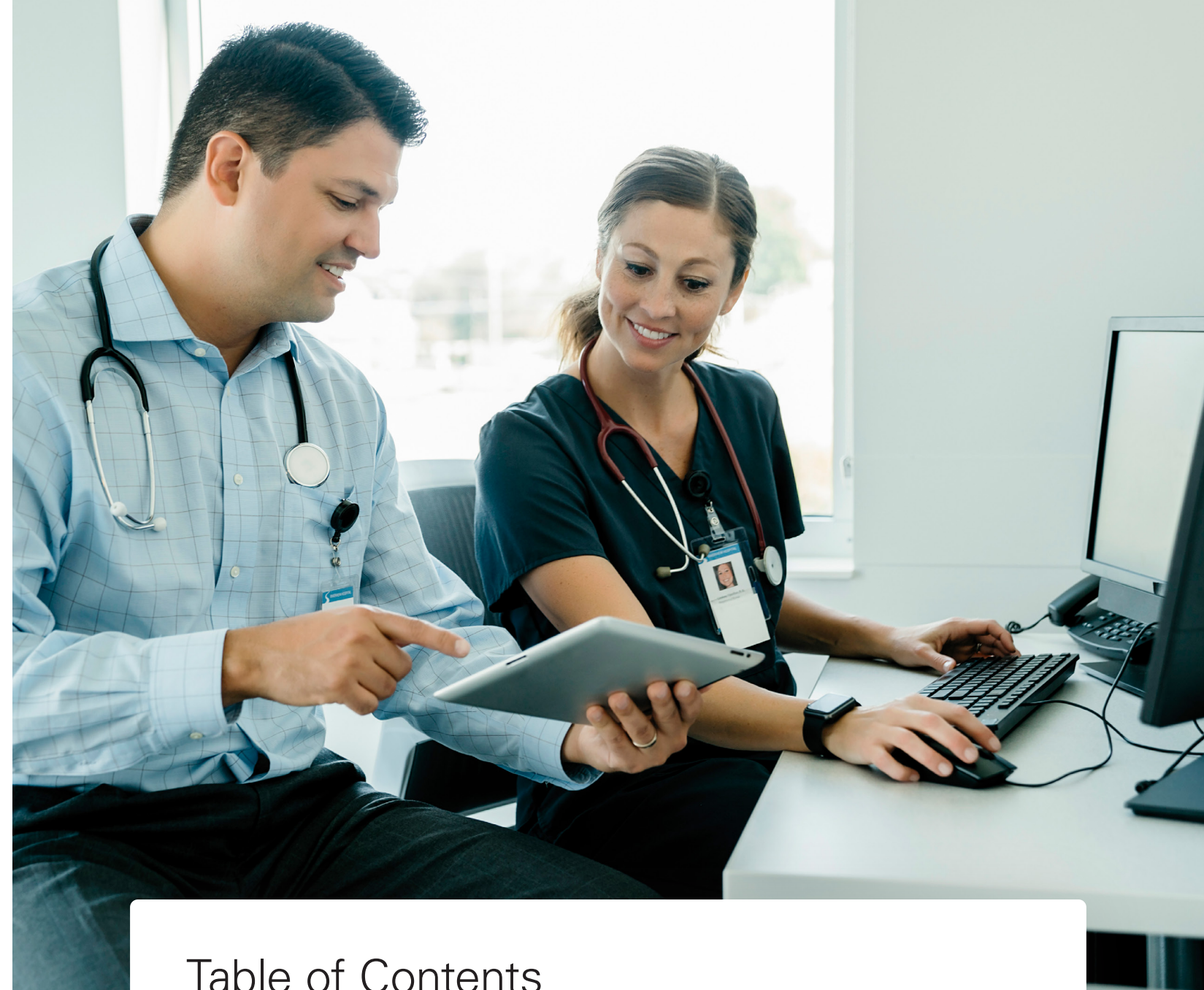


Table of Contents

Understanding the Statin Measures	2
Statin Therapy for Patients with Cardiovascular Disease (SPC)	2
Statin Therapy for Patients with Diabetes (SPD)	3
Comparison Chart	4
Exclusions	5
Statin Drug List	10
How to Contact Your Commercial Quality Improvement Team.....	12

Understanding the Statin Measures

The National Committee for Quality Assurance (NCQA) has established specifications that impact HEDIS® measures for patients with cardiovascular disease and for patients with diabetes. These measures are focused on two of the major statin benefit populations described in the American College of Cardiology/American Heart Association guidelines and align with recommendations from the American Diabetes Association. Both statin prescribing measures recommend statin therapy for people with either cardiovascular disease or diabetes, regardless of cholesterol levels.

Statin Therapy for Patients with Cardiovascular Disease (SPC)

Patients identified as having clinical atherosclerotic cardiovascular disease (ASCVD), and who meet the below criteria, should receive at least one moderate or high intensity statin medication during the measurement year. Once a patient has received this medication, they should stay on it for at least 80% of their treatment period.*

Other criteria:

- › Males 21-75 with ASCVD
- › Females 40-75 with ASCVD
- › Patients who have both BlueCross medical and pharmacy coverage

ASCVD is identified for this measure in two ways: by an event in the previous year or by both previous and current diagnoses.

Event criteria:

- › Myocardial infarction (MI) (heart attack)
- › Coronary artery bypass graft surgery (CABG)
- › Percutaneous coronary intervention (PCI)
- › Other revascularization procedures

Diagnosis criteria:

Patients with an ischemic vascular disease (IVD) diagnosis who had at least one visit (outpatient, acute inpatient, telehealth, or acute inpatient discharge) for this diagnosis during both the measurement year and the year prior to the measurement year.



Helpful Tip

Prescribing 90-day medication fills often saves patients time and money and helps them stay on their medications.

HEDIS® is a registered trademark of NCQA.

* Treatment period is defined as the time from when the patient initially fills their prescription to the end of the measurement year.



Statin Therapy for Patients with Diabetes (SPD)

Patients who are identified with diabetes, (type 1 or 2), who meet the below criteria, should receive at least one statin medication of any intensity during the measurement year. Once a patient has received this medication, they should stay on it for at least 80% of their treatment period.*

Other criteria:

- › Any patient 40-75 identified with diabetes
- › Patients who **don't** have ASCVD
- › Patients who have both BlueCross medical and pharmacy coverage

Patients are identified for this measure through claims/encounter data or by pharmacy data during the measurement year or the year prior. Data can come from:

- › An inpatient encounter or inpatient discharge with a diagnosis of diabetes
- › Two or more outpatient, observation, or telehealth visits on different dates of service with a diagnosis of diabetes — or any combination of these visits.
- › Pharmacy data from patients who were dispensed insulin or hypoglycemics/antihyperglycemics



Helpful Tip

Glucophage (metformin) as a solo agent isn't included as one of the above diabetes medications that qualify patients for this measure. This is because it's used to treat conditions other than diabetes.

* Treatment period is defined as the time from when the patient initially fills their prescription to the end of the measurement year.

Comparison Chart for SPC and SPD

This comparison chart helps to highlight the differences between the statin measures.

Measure	Age Range	Brief Inclusion/ Qualifying Criteria	Requirement to Meet the Measure	Level of Statin Required
SPC-Received Statin-Therapy	Males 21-75 Females 40-75	Patients with clinical atherosclerotic cardiovascular disease (ASCVD)	Patients need to fill their statin medication prescription.	Moderate to High Intensity
SPC-Adherence Statin Therapy	Males 21-75 Females 40-75	Patients with clinical ASCVD	Patients should fill enough statin medication to cover at least 80% of their treatment period.	Moderate to High Intensity
SPD-Received Statin-Therapy	Patients 40-75	Patients with diabetes, who don't have ASCVD	Patients need to fill their statin medication prescription.	Any intensity
SPD-Adherence Statin Therapy	Patients 40-75	Patients with diabetes, who don't have ASCVD	Patients should fill enough statin medication to cover at least 80% of their treatment period.	Any intensity



Helpful Tip

Because these measures are closed through pharmacy claims data, it's important to make sure your patients are filling their prescriptions and that the pharmacy is filing the claim through the patient's BlueCross plan. When we receive this data electronically, it helps in meeting the qualifications to close the gap in care for HEDIS.

Exclusions

Exclusions and Samples of Exclusion Codes for SPC

Patients can be excluded from the measure if they meet any of the below criteria:

- › Patients with a diagnosis of pregnancy during the measurement year or the year prior to the measurement year
- › In vitro fertilization in the measurement year or year prior to the measurement year
- › Dispensed at least one prescription for clomiphene during the measurement year or the year prior to the measurement year
- › End-stage renal disease (ESRD) diagnosis (or dialysis) during the measurement year or the year prior to the measurement year
- › Cirrhosis during the measurement year or the year prior to the measurement year
- › Myalgia, myositis, myopathy, or rhabdomyolysis during the measurement year – sample codes include: [G72.0](#), [G72.2](#), [G72.9](#), [M60.80](#), [M60.88](#), [M60.89](#), [M60.9](#), [M62.82](#), [M79.1](#), [M79.10](#)
- › Patients in hospice or using hospice services anytime during the measurement year – [Z51.5](#)
- › Members who died any time during the measurement year
- › Patients receiving palliative care during the measurement year
- › Medicare members who are 66 and older and are enrolled in a special needs plan (SNP) any time during the measurement year or who are living in a long-term facility/institution during the measurement year
- › Patients 66 years and older as of Dec. 31 of the current measurement year who meet both the advanced illness and frailty criteria (*Refer to the [Advanced Illness and Frailty guide](#) for the criteria.*)



Cirrhosis	
Cirrhosis	[K70.30] Alcoholic cirrhosis of liver without ascites
	[K70.31] Alcoholic cirrhosis of liver with ascites
	[K71.7] Toxic liver disease with fibrosis and cirrhosis of liver
	[K74.3] Primary biliary cirrhosis
	[K74.4] Secondary biliary cirrhosis
	[K74.5] Biliary cirrhosis, unspecified
	[K74.60] Unspecified cirrhosis of liver
	[K74.69] Other cirrhosis of liver
	[P78.81] Congenital cirrhosis (of liver)

End Stage Renal Disease	
ESRD Diagnosis	[N18.5] Chronic kidney disease, stage 5
	[N18.6] End stage renal disease
	[Z99.2] Dependence on renal dialysis

Myopathy	
Muscular Pain and Disease	[G72.0] Drug-induced myopathy
	[G72.2] Myopathy due to other toxic agents
	[G72.9] Myopathy, unspecified

Myositis	
Muscular Pain and Disease	[M60.80] Other myositis, unspecified site
	[M60.88] Other myositis, other site
	[M60.89] Other myositis, multiple sites
	[M60.9] Myositis, unspecified

Rhabdomyolysis	
Muscular Pain and Disease	[M62.82] Rhabdomyolysis

Myalgia	
Muscular Pain and Disease	[M79.1] Myalgia
	[M79.10] Myalgia, unspecified site
	[M79.11] Myalgia of mastication muscle
	[M79.12] Myalgia of auxiliary muscles, head and neck
	[M79.18] Myalgia, other site

Note: To exclude the patient, the diagnosis code for the applicable condition may be submitted on a claim or an attestation may be made in the Quality Care Rewards application located in Availity®.



Exclusions and Samples of Exclusion Codes for SPD

Patients can be excluded from the measure if they meet any of the below criteria:

- › Patients with cardiovascular disease identified by an “event” in the previous year.

Event Criteria:

- Myocardial Infarction (MI) (heart attack)

- Coronary artery bypass graft surgery (CABG)

- Percutaneous coronary intervention (PCI)

- Other revascularization procedures
- › Patients with cardiovascular disease identified by diagnosis during the measurement year and the year prior

› Patients who don’t have a diagnosis of diabetes, during the measurement year or the year prior to the measurement year **and** who had a diagnosis of polycystic ovarian syndrome, gestational diabetes, or steroid-induced diabetes in any setting, during the measurement year or the year prior to the measurement year

› Patients with a diagnosis of pregnancy during the measurement year or the year prior to the measurement year

› In vitro fertilization in the measurement year or year prior to the measurement year

› Dispensed at least one prescription for clomiphene during the measurement year or the year prior to the measurement year

› ESRD diagnosis or dialysis during the measurement year or the year prior to the measurement year
- › Cirrhosis during the measurement year or the year prior to the measurement year – sample codes: [G72.0](#), [G72.2](#), [G72.9](#), [M60.80](#), [M60.88](#), [M60.89](#), [M60.9](#), [M62.82](#), [M79.1](#), [M79.10](#)

› Myalgia, myositis, myopathy, or rhabdomyolysis during the measurement year

› Patients in hospice or using hospice services anytime during the measurement year

› Patients receiving palliative care during the measurement year – [Z51.5](#)

› Medicare patients who are 66 and older and are enrolled in an SNP any time during the measurement year or who are living in a long-term facility/institution during the measurement year

› Members 66 and older as of Dec. 31 of the current measurement year who meet both the advanced illness and frailty criteria. *(Refer to the [Advanced Illness and Frailty guide](#) for the criteria.)*

› Dispensed dementia medication:

- Donepezil

- Galantamine

- Rivastigmine

- Memantine

- Donepezil – memantine

› Members who died any time during the measurement year

Cirrhosis

Cirrhosis	[K70.30] Alcoholic cirrhosis of liver without ascites
	[K70.31] Alcoholic cirrhosis of liver with ascites
	[K71.7] Toxic liver disease with fibrosis and cirrhosis of liver
	[K74.3] Primary biliary cirrhosis
	[K74.4] Secondary biliary cirrhosis
	[K74.5] Biliary cirrhosis, unspecified
	[K74.60] Unspecified cirrhosis of liver
	[K74.69] Other cirrhosis of liver
	[P78.81] Congenital cirrhosis (of liver)

End Stage Renal Disease

ESRD Diagnosis	[N18.5] Chronic kidney disease, stage 5
	[N18.6] End stage renal disease
	[Z99.2] Dependence on renal dialysis

Myopathy

Muscular Pain and Disease	[G72.0] Drug-induced myopathy
	[G72.2] Myopathy due to other toxic agents
	[G72.9] Myopathy, unspecified

Myositis

Muscular Pain and Disease	[M60.80] Other myositis, unspecified site
	[M60.88] Other myositis, other site
	[M60.89] Other myositis, multiple sites
	[M60.9] Myositis, unspecified

Rhabdomyolysis

Muscular Pain and Disease	[M62.82] Rhabdomyolysis
---------------------------	-------------------------

Myalgia	
Muscular Pain and Disease	[M79.1] Myalgia
	[M79.10] Myalgia, unspecified site
	[M79.11] Myalgia of mastication muscle
	[M79.12] Myalgia of auxiliary muscles, head and neck
	[M79.18] Myalgia, other site

Note: To exclude the patient, the diagnosis code for the applicable condition may be submitted on a claim or an attestation may be made in the Quality Care Rewards application located in Availity®.

Organizations that apply optional exclusions must exclude members from the denominator for both rates.

If the member was included in the measure based on claims or encounter data, as described in the event/ diagnosis criteria, the optional exclusions don’t apply because the member had a diagnosis of diabetes.

Statin Medication List

Description	Prescription	Medication Lists
High-intensity statin therapy	Atorvastatin 40-80 mg	Atorvastatin High Intensity Medications List
	Amlodipine-atorvastatin 40-80 mg	Amlodipine Atorvastatin High Intensity Medications List
	Rosuvastatin 20-40 mg	Rosuvastatin High Intensity Medications List
	Simvastatin 80 mg	Simvastatin High Intensity Medications List
	Ezetimibe-simvastatin 80 mg	Ezetimibe Simvastatin High Intensity Medications List

Description	Prescription	Medication Lists
Moderate-intensity statin therapy	Atorvastatin 10-20 mg	Atorvastatin Moderate Intensity Medications List
	Amlodipine-atorvastatin 10-20 mg	Amlodipine Atorvastatin Moderate Intensity Medications List
	Rosuvastatin 5-10 mg	Rosuvastatin Moderate Intensity Medications List
	Simvastatin 20-40 mg	Simvastatin Moderate Intensity Medications List
	Ezetimibe-simvastatin 20-40 mg	Ezetimibe Simvastatin Moderate Intensity Medications List
	Pravastatin 40-80 mg	Pravastatin Moderate Intensity Medications List
	Lovastatin 40 mg	Lovastatin Moderate Intensity Medications List
	Fluvastatin 40-80 mg	Fluvastatin Moderate Intensity Medications List
Low-intensity statin therapy	Pitavastatin 1-4 mg	Pitavastatin Moderate Intensity Medications List
	Ezetimibe-simvastatin 10 mg	Ezetimibe Simvastatin Low Intensity Medications List
	Fluvastatin 20 mg	Fluvastatin Low Intensity Medications List
	Lovastatin 10-20 mg	Lovastatin Low Intensity Medications List
	Pravastatin 10–20 mg	Pravastatin Low Intensity Medications List
	Simvastatin 5-10 mg	Simvastatin Low Intensity Medications List

Your Commercial Quality Improvement Team

Patty Howard, RN,
BSN, CPHQ, FAHM
Manager, Quality Improvement
Office: (423) 535-7865
Patty_Howard@BCBST.com

Shannon Dunn, MHA,
BS, LPN, CPHQ, CHC
Clinical Consultant, Quality Improvement
Mobile: (423) 298-3951
Shannon_Dunn@BCBST.com

Jessica Castano, RN,
BS, CPHQ
Supervisor, Quality Improvement
Mobile: (423) 535-6655
Jessica_Castano@BCBST.com

Jennifer Rollins, RN,
MSN, CCM, CPHQ, PAHM
Clinical Consultant, Quality Improvement
Mobile: (423) 240-0327
Jennifer_Rollins@BCBST.com

Lisa Eaves, RN,
BS, CPHQ, PAHM
Clinical Consultant, Quality Improvement
Mobile: (423) 326-4859
Lisa_Eaves@BCBST.com

Leigh Sanders, RN,
CCM, CPHQ, PAHM
Clinical Consultant, Quality Improvement
Office: (423) 702-1505
Leigh_Sanders@BCBST.com

Additional Commercial Quality Improvement Resources
can be found under the Quality Initiatives heading at:

- › <https://www.bcbst.com/docs/providers/quality-initiatives/qualiy-care-measures-booklet.pdf>
- › http://www.bcbst.com/docs/providers/PQ_COMM_ResourceGuide_FINAL.pdf

CPT® is a registered trademark of the American Medical Association.

ICD-10-CM is the International Classification of Diseases, Tenth Revision, Clinical Modification.

This document is educational in nature and is not a coverage or payment determination, reconsideration or redetermination, medical advice, plan pre-authorization or a contract of any kind made by BlueCross BlueShield of Tennessee. Inclusion of a specific code or procedure is not a guarantee of claim payment and is not instructive as to billing and coding requirements. Coverage of a service or procedure is determined based upon the applicable member plan or benefit policy. For information about BlueCross BlueShield of Tennessee member benefits or claims, please call the number on the back of the member's ID card. This document may not be reproduced, printed, photocopied or distributed without prior written consent from BlueCross BlueShield of Tennessee.

Healthcare Effectiveness Data and Information Set (HEDIS)

Developed by the National Committee for Quality Assurance (NCQA), HEDIS® is the most widely used set of performance measures in the managed care industry. It contains measures that show health plans those areas where a stronger focus could lead to improvements in member health. HEDIS® reporting is mandated by NCQA for compliance and accreditation.

Content reproduced with permission from HEDIS 2022, Volume 2: Technical Specifications for Health Plans by the National Committee for Quality Assurance (NCQA). HEDIS® is a registered trademark of NCQA. HEDIS measures and specifications are not clinical guidelines and do not establish a standard of medical care. NCQA makes no representations, warranties, or endorsement about the quality of any organization or physician that uses or reports performance measures and NCQA has no liability to anyone who relies on such measures or specifications. Limited proprietary coding is contained in the measure specifications for convenience. Users of the proprietary code sets should obtain all necessary licenses from the owners of these code sets. NCQA disclaims all liability for use or accuracy of any coding contained in the specifications.

To purchase copies of this publication, including the full measures and specifications, contact NCQA Customer Support at 888-275-7585 or visit <http://www.ncqa.org/publications>.